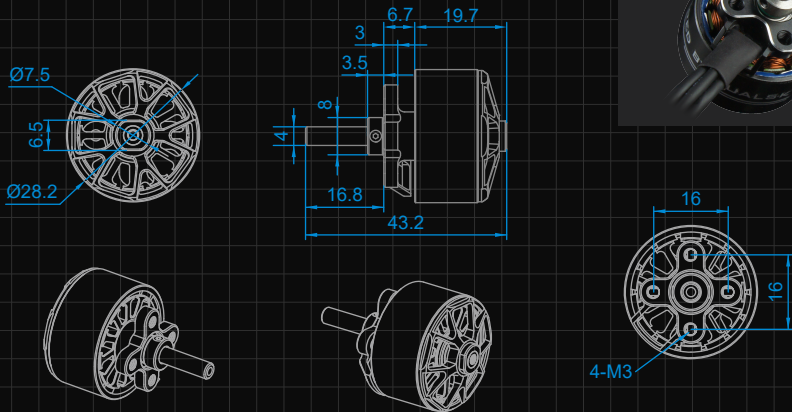


## Dimension 尺寸图



\* Please ask us for 3D design drawings.

## Specification 参数

NAME 型号	XM2830EG-8	XM2830EG-10	XM2830EG-14
SKU 商品编码	52148	52149	52150
RPM / V (KV) KV值	2450	1950	1400
Weight (g) 重量		55	
Diameter (mm) 直径		28.6	
Length (mm) 长度		26.4	
Diameter of Shaft(mm) 轴径		4.0, hollow	
Pitch of holes (mm) 安装孔距		16/16	
Input Connectors 输入插头		GC3.5	
Slots & Poles 槽数, 极数		12N14P	
I <sub>o</sub> @10V(A)空载电流	3.35	2.30	1.35
Resistance(Ri)(mOhm) 电机内阻	15	21.5	37.5
No. of Cells(LiPo) 适用电池	2..3 <sup>1</sup>	3 <sup>1</sup> ..4	3 <sup>1</sup> ..4
Max. EfficiencyCurrent(A) 效率电流	27	24.5	20
Max. Burst Current (15S)[A] 峰值电流	54	49	40
Max. Power(15S)[W] 峰值功率	648	588	480
Torque (mNM) 扭矩	300	340	390
Recommended ESC 推荐调速器	XC4018BA 15° (Middle)	XC4018BA 15° (Middle)	XC4018BA 15° (Middle)
Propeller 螺旋桨	2S: 8x5, 8x6, 9x4, 8x4 (3-Blade) 3S <sup>1</sup> : 7x4, 7x5, 8x4 <sup>2</sup> , 6x4 (3-Blade)	3S <sup>1</sup> : 8x4, 8x5, 9x4 <sup>2</sup> , 8x4 (3-Blade) 4S: 7x3, 7x4, 7x5 <sup>2</sup> , 7x3 (3-Blade)	3S <sup>1</sup> : 9x6, 10x5, 10x6, 9x5 (3-Blade) 4S: 8x4, 8x5, 8x6, 8x4 (3-Blade)
Applications 适用级别	F5K, eRES(F5L), ASFC P5B, Light F5J, Speed Wings, Small UAV		

注: <sup>1</sup> Suggested working voltage(NOC) 建议工作电压(串联节数)

<sup>2</sup> Good throttle management needed 可在有效控制油门的情况下使用

# 7.4V

# XM2830EG-8 (2450KV)

Motor @ Optimum Efficiency 优化效率点



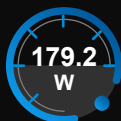
Current  
电流



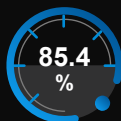
Revolutions  
转速



electric Power  
电功率



mech. Power  
机械功率



Efficiency  
效率

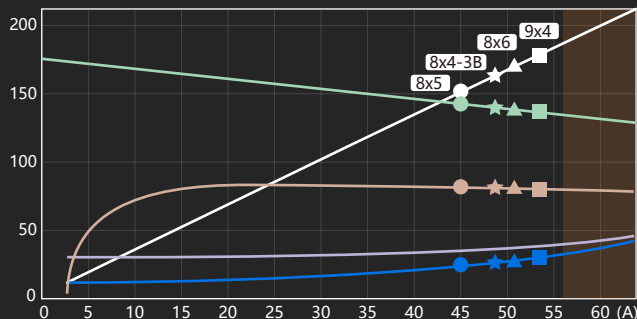
EL.POWER 电功率 [IN 2W]

EFFICIENCY 效率 [%]

MAX. REVOLUTIONS  
转速 [IN 100RPM]

WASTE POWER  
损耗功率 [IN 2W]

MOTOR CASE TEMP.  
马达壳体温度 [°C]



Voltage 电压 (V)	Propeller 螺旋桨 (RPM)	Throttle 油门 (%)	Current 电流 (A)	el. Power 输入功率 (W)	Efficiency 效率 (%)	Thrust 静拉力 (g)	Spec. Thrust 螺旋桨效率 (g/W)	
7.4V (2S LIPO)				<b>8x5</b>				
		8000	50	7.8	56	81.9	441	7.9
		9000	57	10.9	78.4	83.2	558	7.1
		11000	72	20	141.2	84.4	833	5.9
		12000	80	26.2	182.9	84.5	992	5.4
		13000	89	33.7	232.5	84.6	1164	5
		14212	100	45.3	306.2	84.1	1391	4.5
				<b>8x6</b>				
		8000	51	9.3	66.7	82.5	529	7.9
		10000	66	18.1	128.2	83.8	827	6.4
		11000	74	24.3	170.3	83.9	1000	5.9
		12000	83	32.1	221.2	83.9	1190	5.4
		13000	92	41.5	282	83.7	1397	5
		13794	100	50.9	340	83.1	1573	4.6
			<b>9x4</b>					
	8000	52	9.9	71.1	82.6	502	7.1	
	9000	59	14.1	100.4	83.3	636	6.3	
	10000	67	19.4	137.1	83.6	785	5.7	
	12000	84	34.5	237.2	83.5	1130	4.8	
	13000	93	44.9	302.6	83.2	1326	4.4	
	13636	100	53	352.6	82.7	1459	4.1	
			<b>8x4 (3-Blade)</b>					
	8000	51	8.6	61.6	82.3	450	7.3	
	9000	58	12.1	86.6	83.3	569	6.6	
	11000	73	22.3	156.6	84.2	850	5.4	
	12000	82	29.3	203.2	84.2	1012	5	
	13000	90	37.8	258.6	84.1	1188	4.6	
	13984	100	48.3	324.8	83.6	1374	4.2	

# 11.1V

# XM2830EG-8 (2450KV)

Motor @ Optimum Efficiency 优化效率点



Current  
电流



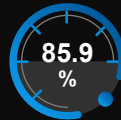
Revolutions  
转速



electric Power  
电功率



mech. Power  
机械功率



Efficiency  
效率

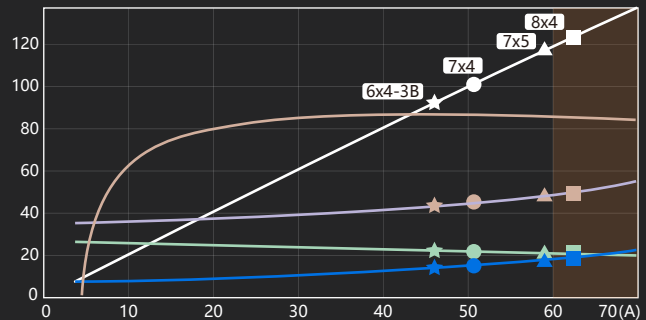
EL.POWER 电功率 [IN 5W]

EFFICIENCY 效率 [%]

MAX. REVOLUTIONS  
转速 [IN 1000RPM]

WASTE POWER  
损耗功率 [IN 5W]

MOTOR CASE TEMP.  
马达壳体温度 [°C]



Voltage 电压 (V)	Propeller 螺旋桨 (RPM)	Throttle 油门 (%)	Current 电流 (A)	el. Power 输入功率 (W)	Efficiency 效率 (%)	Thrust 静拉力 (g)	Spec. Thrust 螺旋桨效率 (g/W)
<b>7x4</b>							
12800	53	53	9.7	104.9	83.9	605	5.8
14400	60	60	13.7	147.5	85	766	5.2
16000	68	68	18.8	200.7	85.6	945	4.7
19200	84	84	33.1	344.5	86.2	1361	4
20800	93	93	42.7	437.8	86.3	1597	3.6
21907	100	100	51.1	515.6	85.7	1772	3.4
<b>7x5</b>							
12800	54	54	12	129.7	84.8	756	5.8
14400	61	61	17.2	183.2	85.5	957	5.2
16000	69	69	23.7	250.3	85.8	1181	4.7
17600	78	78	32	332.7	85.9	1429	4.3
19200	87	87	42.3	432.2	85.9	1701	3.9
21194	100	100	59.2	588.4	85.2	2073	3.5
<b>8x4</b>							
11200	50	50	10.9	110.6	84.3	653	5.9
12600	58	58	15.6	156.1	85	827	5.3
15400	73	73	29	283.7	85.4	1235	4.4
16800	82	82	38.3	368.7	85.3	1469	4
18200	91	91	49.9	470	85.1	1725	3.7
19357	100	100	62.1	572.4	84.4	1951	3.4
<b>6x4 (3-Blade)</b>							
14400	55	55	9.7	112.2	83.4	615	5.5
16200	63	63	13.8	157.4	84.6	778	4.9
18000	71	71	18.9	213.8	85.4	961	4.5
19800	79	79	25.2	283	85.9	1162	4.1
21600	88	88	33	366.2	86.2	1383	3.8
23930	100	100	46	500	85.8	1698	3.4

11.1V  
(3S LIPO)

# 11.1V

# XM2830EG-10 (1950KV)

Motor @ Optimum Efficiency 优化效率点



Current  
电流



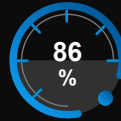
Revolutions  
转速



electric Power  
电功率



mech. Power  
机械功率



Efficiency  
效率

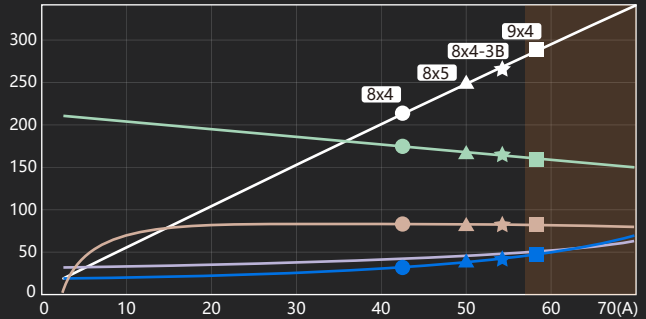
EL.POWER 电功率 [IN 2W]

EFFICIENCY 效率 [%]

MAX. REVOLUTIONS  
转速 [IN 100RPM]

WASTE POWER  
损耗功率 [IN 2W]

MOTOR CASE TEMP.  
马达壳体温度 [°C]



Voltage 电压 (V)	Propeller 螺旋桨 (RPM)	Throttle 油门 (%)	Current 电流 (A)	el. Power 输入功率 (W)	Efficiency 效率 (%)	Thrust 静拉力 (g)	Spec. Thrust 螺旋桨效率 (g/W)
11.1V (3S LIPO)				<b>8x4</b>			
	10400	54	8.7	95	84.8	596	6.3
	11700	62	12.4	134.1	85.5	754	5.6
	13000	70	17.1	183.2	85.9	931	5.1
	14300	78	23	243.5	86	1127	4.6
	15600	87	30.2	316.3	85.9	1341	4.2
	17378	100	43.1	442.4	85.2	1664	3.8
				<b>8x5</b>			
	9600	51	8.6	93.5	84.7	635	6.8
	10800	58	12.3	132.2	85.2	803	6.1
	13200	73	22.7	240.9	85.4	1200	5
	14400	81	29.9	313.4	85.3	1428	4.6
	15600	90	38.8	399.7	85	1676	4.2
	16801	100	50	506.2	84.2	1944	3.8
			<b>9x4</b>				
9600	52	11.1	119.9	84.6	723	6	
10800	60	15.9	170.4	84.8	915	5.4	
12000	68	22.1	234.2	84.6	1130	4.8	
13200	76	30	313	84.3	1367	4.4	
14400	85	39.8	408.6	83.8	1627	4	
16095	100	58.4	581.7	82.6	2033	3.5	
			<b>8x4 (3-Blade)</b>				
9600	51	9.5	103.4	84.8	648	6.3	
10800	58	13.6	146.5	85.1	820	5.6	
12000	66	18.8	200.8	85.2	1012	5	
14400	83	33.6	348.8	84.8	1457	4.2	
15600	92	43.6	445.5	84.4	1710	3.8	
16520	100	53.4	536.5	83.6	1918	3.6	

# 14.8V

# XM2830EG-10 (1950KV)

Motor @ Optimum Efficiency 优化效率点



Current  
电流



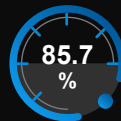
Revolutions  
转速



electric Power  
电功率



mech. Power  
机械功率



Efficiency  
效率

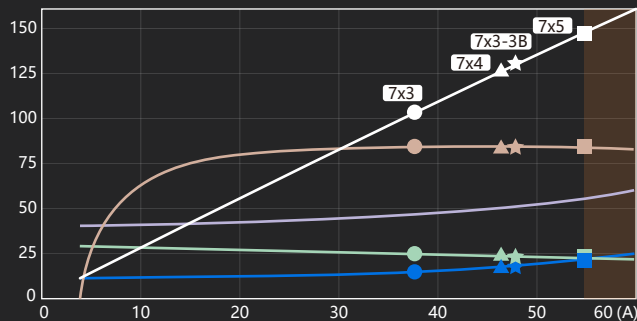
EL.POWER 电功率 [IN 5W]

EFFICIENCY 效率 [%]

MAX. REVOLUTIONS  
转速 [IN 1000RPM]

WASTE POWER  
损耗功率 [IN 5W]

MOTOR CASE TEMP.  
马达壳体温度 [°C]



Voltage 电压 (V)	Propeller 螺旋桨 (RPM)	Throttle 油门 (%)	Current 电流 (A)	el. Power 输入功率 (W)	Efficiency 效率 (%)	Thrust 静拉力 (g)	Spec. Thrust 螺旋桨效率 (g/W)
14.8V (4S LIPO)	<b>7x3</b>						
	14400	55	7.7	112.3	83.7	574	5.1
	16200	62	10.9	157.9	84.8	727	4.6
	18000	70	14.9	214.8	85.5	897	4.2
	19800	78	20	284.5	85.9	1085	3.8
	21600	86	26.1	368.3	86.1	1292	3.5
	24373	100	38.4	531.6	85.6	1645	3.1
	<b>7x4</b>						
	10400	52	8.8	96	83.9	596	6.2
	11700	60	12.7	137	83.7	754	5.5
	13000	68	17.7	188.8	83.3	931	4.9
	14300	76	23.9	252.9	82.8	1127	4.5
	15600	85	31.7	330.9	82.1	1341	4.1
	17478	100	46.8	476.6	80.6	1683	3.5
<b>7x5</b>							
13600	53	10.6	153.9	85.7	854	5.5	
15300	61	15.2	217.9	86.2	1080	5	
17000	69	21	298.3	86.4	1334	4.5	
18700	77	28.3	397.2	86.4	1614	4.1	
20400	86	37.4	516.5	86.2	1920	3.7	
22831	100	54.8	735.3	85.2	2405	3.3	
<b>7x3 (3-Blade)</b>							
14400	56	10.5	152	85.5	732	4.8	
16200	64	15	214.9	86.1	927	4.3	
18000	72	20.7	293.9	86.4	1144	3.9	
19800	81	27.8	390.8	86.5	1384	3.5	
21600	90	36.6	507.7	86.4	1648	3.2	
23441	100	48.3	656.3	85.6	1940	3	

# 11.1V

# XM2830EG-14 (1400KV)

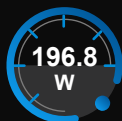
Motor @ Optimum Efficiency 优化效率点



Current  
电流



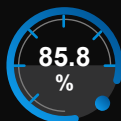
Revolutions  
转速



electric Power  
电功率



mech. Power  
机械功率



Efficiency  
效率

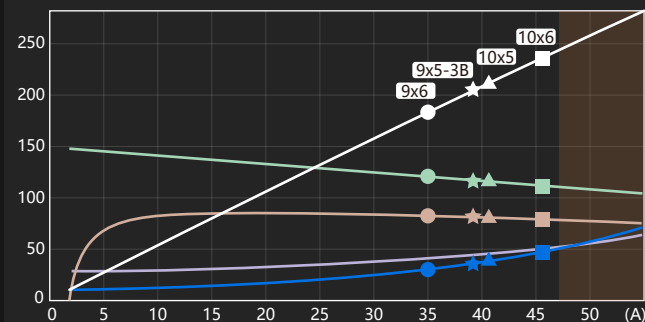
EL.POWER 电功率 [IN 2W]

EFFICIENCY 效率 [%]

MAX. REVOLUTIONS  
转速 [IN 100RPM]

WASTE POWER  
损耗功率 [IN 2W]

MOTOR CASE TEMP.  
马达壳体温度 [°C]



Voltage 电压 (V)	Propeller 螺旋桨 (RPM)	Throttle 油门 (%)	Current 电流 (A)	el. Power 输入功率 (W)	Efficiency 效率 (%)	Thrust 静拉力 (g)	Spec. Thrust 螺旋桨效率 (g/W)
11.1V (3S LIPO)	<b>9x6</b>						
	7200	54	7	76.2	84.2	610	8
	8100	61	10	108.3	84.4	772	7.1
	9000	69	13.8	148.7	84.3	953	6.4
	9900	78	18.6	198.7	84	1153	5.8
	10800	87	24.5	259.3	83.6	1373	5.3
	12063	100	35.3	367.8	82.4	1713	4.7
	<b>10x5</b>						
	7200	55	9	97.6	83.5	697	7.1
	8000	63	12.4	134.3	83.3	861	6.4
	8800	70	16.8	179.6	82.9	1042	5.8
	9600	78	22.1	234.6	82.4	1240	5.3
	10400	86	28.6	300.5	81.8	1455	4.8
	11573	100	41.1	423	80.4	1802	4.3
<b>10x6</b>							
6400	49	7.6	83.1	82.7	661	8	
7200	57	11	118.6	82.5	837	7.1	
8800	72	20.6	219.6	81.3	1250	5.7	
9600	81	27.4	287.8	80.6	1488	5.2	
10400	90	35.6	369.5	79.8	1746	4.7	
11172	100	45.8	467.2	78.6	2015	4.3	
<b>9x5 (3-Blade)</b>							
7200	55	8.1	88.2	83.9	648	7.4	
8100	63	11.6	125.7	83.8	821	6.5	
9000	71	16.1	173.1	83.5	1013	5.9	
9900	80	21.8	231.8	83	1226	5.3	
10800	89	28.8	303.1	82.4	1459	4.8	
11777	100	38.7	400.1	81.3	1735	4.3	

# 14.8V

# XM2830EG-14 (1400KV)

Motor @ Optimum Efficiency 优化效率点



Current  
电流



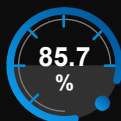
Revolutions  
转速



electric Power  
电功率



mech. Power  
机械功率



Efficiency  
效率

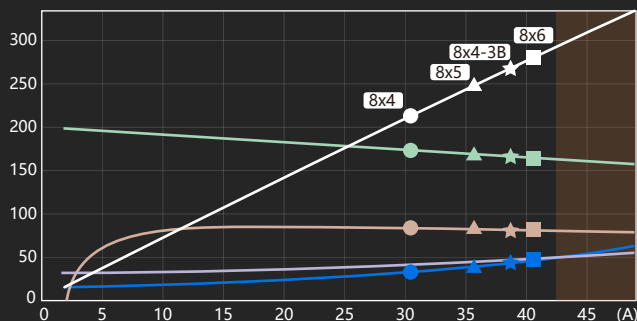
EL.POWER 电功率 [IN 2W]

EFFICIENCY 效率 [%]

MAX. REVOLUTIONS  
转速 [IN 100RPM]

WASTE POWER  
损耗功率 [IN 2W]

MOTOR CASE TEMP.  
马达壳体温度 [°C]



Voltage 电压 (V)	Propeller 螺旋桨 (RPM)	Throttle 油门 (%)	Current 电流 (A)	el. Power 输入功率 (W)	Efficiency 效率 (%)	Thrust 静拉力 (g)	Spec. Thrust 螺旋桨效率 (g/W)
14.8V (4S LIPO)				<b>8x4</b>			
	10400	56	6.5	94.4	85.3	596	6.3
	11700	64	9.2	133.5	85.9	754	5.7
	13000	72	12.6	182.4	86.2	931	5.1
	14300	80	16.9	242.6	86.3	1127	4.6
	15600	88	22.2	315.2	86.2	1341	4.3
	17249	100	30.7	431.3	85.4	1640	3.8
				<b>8x5</b>			
	9600	52	6.4	92.7	85.4	635	6.8
	10800	59	9	131.3	85.9	803	6.1
	12000	67	12.4	179.7	86	992	5.5
	14400	83	21.9	311.2	85.8	1428	4.6
	15600	91	28.2	396.9	85.6	1676	4.2
	16765	100	36	499.9	84.7	1936	3.9
			<b>8x6</b>				
9600	53	7.6	111.1	85.5	762	6.9	
10800	60	10.9	157.8	85.7	964	6.1	
12000	68	15.1	216.6	85.7	1190	5.5	
13200	76	20.3	289.1	85.4	1440	5	
14400	85	26.7	376.9	85.1	1714	4.5	
16327	100	40.7	560.7	83.7	2204	3.9	
			<b>8x4 (3-Blade)</b>				
9600	52	7	102.5	85.5	648	6.3	
10800	60	10	145.3	85.8	820	5.6	
12000	67	13.8	199.2	85.9	1012	5.1	
14400	84	24.4	346	85.5	1457	4.2	
15600	93	31.6	441.7	85.1	1710	3.9	
16526	100	38.5	533.1	84.2	1920	3.6	